

SAP Link - Equipment Synchronization

SAP The PCMS SAP Link includes two modules; Equipment Synchronization and Work Order Tracking.

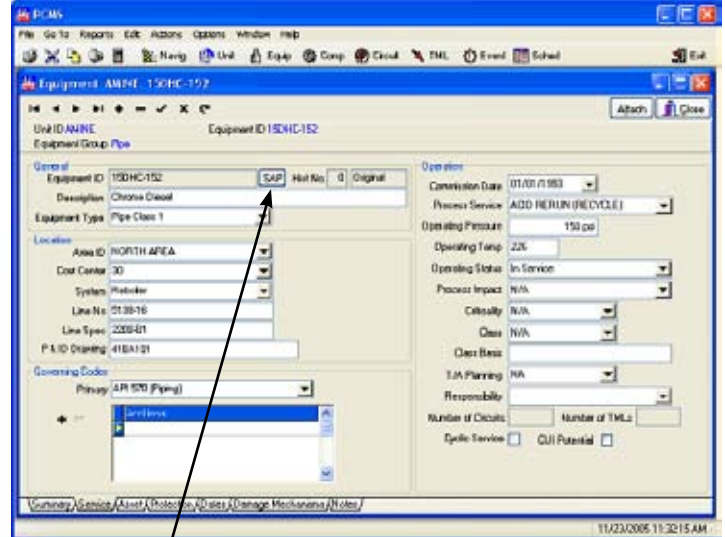
With Equipment Synchronization you can “Centralize all your equipment data”. Changes made to SAP Functional Location and Equipment Data are automatically reflected in PCMS. Work Order Tracking helps you “Close the loop between inspection and maintenance”. Link PCMS Inspections with SAP Work Orders to ensure maintenance work is complete prior to endorsing equipment for service. PCMS links directly with SAP to provide a real-time interface between both software environments.

Equipment Synchronization

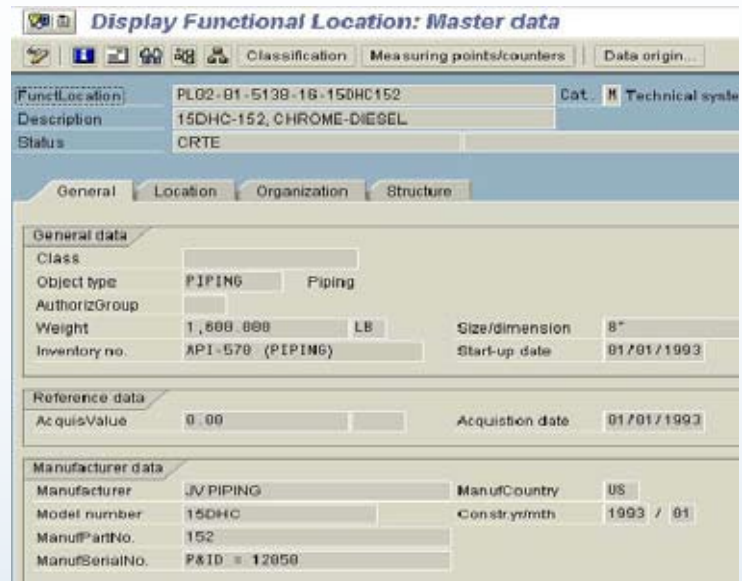
For maximum flexibility, PCMS allows users to configure the equipment link regardless of how SAP is configured. Simply drag and drop SAP equipment to map to PCMS Assets. Enter equipment data into SAP and update PCMS automatically.

- SAP is the Master of Equipment data
- Link equipment, components and circuits to SAP equipment and functional locations using the one-to-one link.
- Only data mapped between PCMS and SAP are updated
- Synchronization is initiated via PCMS equipment link
- PCMS never touches SAP equipment data - it is read only

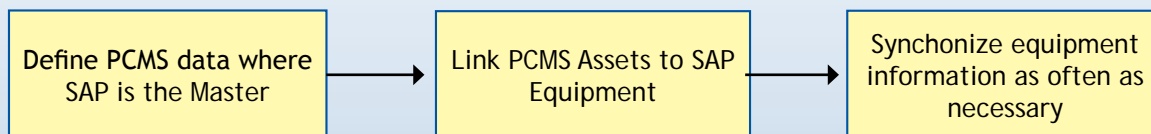
Each time synchronization is run PCMS automatically detects changes to SAP data and applies those changes to PCMS according to your setup rules.



Selecting the SAP Launch Button opens SAP and positions you on the matching Functional Location or Equipment No.



Simple Implementation Steps

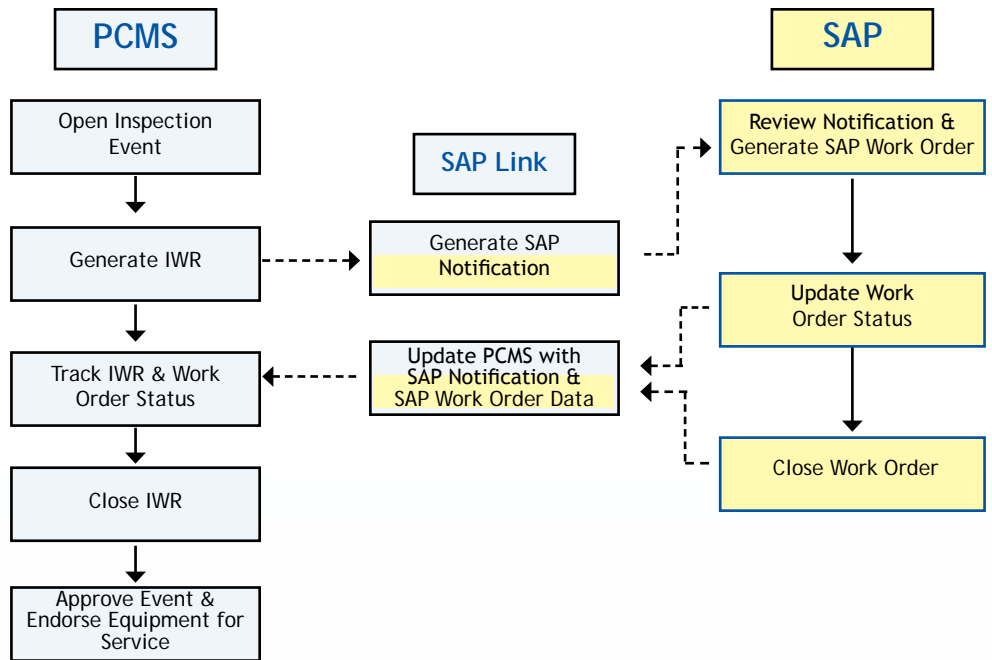


Work Order Tracking

With the Work Order Tracking module you can pass Inspection Work Request (IWR) data to SAP with a click of a button.

The IWR process automatically generates notifications in SAP. Notification and Work Order status information is passed back to PCMS via the Link.

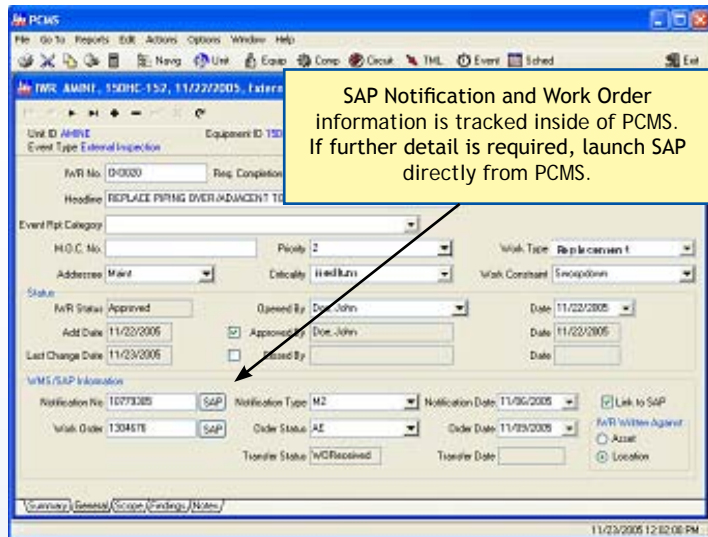
- SAP data can be tracked entirely from PCMS
- SAP can be launched from within PCMSOSHA has flagged the link as a "Best Work Practice"



Overall Benefits - Why the SAP Link?

- Eliminate duplicate data entry of Equipment data and Inspection Work Request data in both PCMS and SAP
- Manage inspection history, future inspection dates, SAP Work Orders, all from one application
- SAP Work Order Status is always up to date in PCMS, ensuring inspections are not approved until all repairs are completed
- Synchronize SAP and PCMS as often as necessary

Connectivity to SAP follows recommended SAP certification requirements by using approved SAP Remote Function Calls. All access to SAP is controlled by Database Security.



For additional information please contact PCMS, a member of MISTRAS Group's Software & Products division.

Phone: (216) 674-0626

Fax: (216) 674-0631

Email: support@pcmssoftware.com

HEADQUARTERS:

195 Clarksville Road, Princeton Junction, NJ 08550 USA

Phone: (609) 716-4150 • Fax: (609) 716-4145

Email: sales@conaminsp.com • www.mistrasgroup.com